

Model B8401 Series

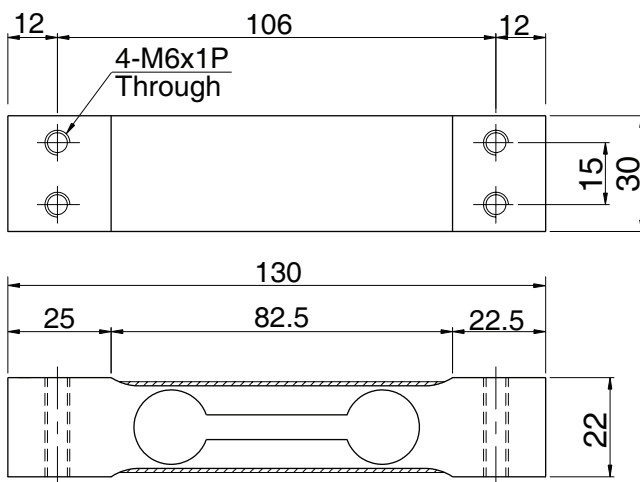
Single point
Bending Beam Load Cell
(6kg ~ 30kg)

The B8401 series single point load cell is designed for low profile scales and automatic check weighing systems where great accuracy, reliability and fast measurement are required.

SPECIFICATIONS

| MODEL | B8401 |
|-------------------------------|-----------------------------------|
| Rated capacity (R.C.) | 6, 10, 25, 30kg |
| Rated output(R.O.) | 2mV/V ± 0.2 |
| Non-linearity | ≤0.03% R.O. |
| Hysteresis | ≤0.03% R.O. |
| Non-repeatability | ≤0.01% R.O. |
| Creep error | ≤0.03% in 20min. |
| Zero balance | ≤5% R.O. |
| Compensated temperature range | -10 ~ 70°C |
| Operating temperature range | -20 ~ 80°C |
| Temp. effect on rated output | ≤0.012% LOAD/10°C |
| Temp. effect on zero balance | ≤0.03% R.O./10°C |
| Terminal input resistance | 420 Ohms ±20 Ohms |
| Terminal output resistance | 350 Ohms ±5 Ohms |
| Insulation resistance (Min.) | 2000 MOhms at 50V DC |
| Excitation Voltage | 10V(Recommended) /15V(Maximun) |
| Electrial connection | Ø4mmx1.5m(22AWG x 4Core Shielded) |
| Protection class | meets IP 65 |
| Safe overload | 150% R.C |
| Ultimate overload | 300% R.C |

| Capacity | Allowable Maximum Platform Size |
|----------------------------|---------------------------------|
| 6 ~ 30 kg (58.84 ~ 294.2N) | 300 x 300 mm |



ORDERING INFORMATION

B8401 - **30**
 MODEL CAPACITY
 B8401 6, 10, 25, 30 kg

WIRING INFORMATION

