

## Model BCR2 Series Compression Load Cell



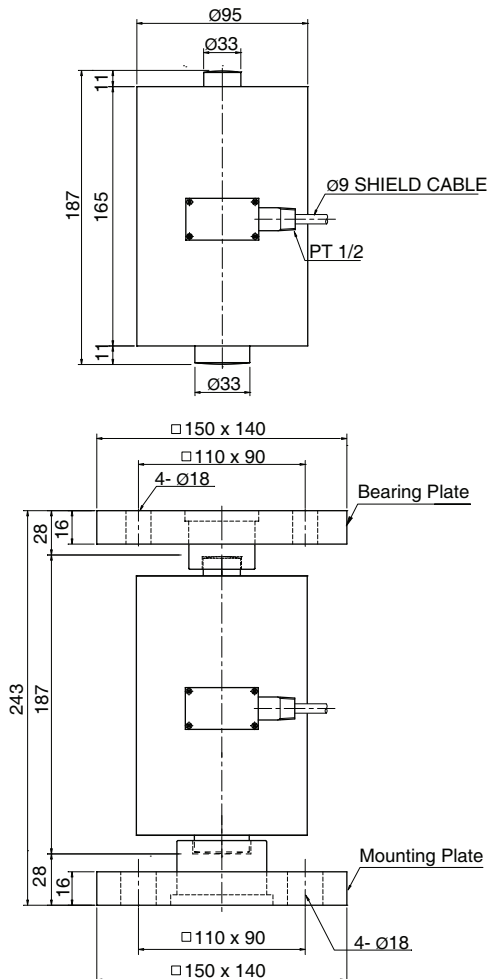
The BCR2 series are hermetically sealed canister cells designed for compression service only. They are ideal for applications where optimum precision is needed.

The BCR2 series maintain their accuracy over a large range of temperature and withstand severe conditions such as moisture, dust and vibration.

- Insensitive to side load
- Hermetically sealed
- High overload tolerance
- Robust high capacity design
- High alloy steel construction

### SPECIFICATIONS

MODEL	BCR2
Rated capacity (R.C.)	5 ton
Rated output(R.O.)	3.0mV/V ± 0.003
Non-linearity	≤0.02% R.O.
Hysteresis	≤0.02% R.O.
Non-repeatability	≤0.01% R.O.
Creep error	≤0.02% in 20min.
Zero balance	≤1% R.O.
Compensated temperature range	-10 ~ 70°C
Operating temperature range	-20 ~ 80°C
Temp. effect on rated output	≤0.02% LOAD/10°C
Temp. effect on zero balance	≤0.02% R.O./10°C
Terminal input resistance	350 Ohms ± 5 Ohms
Terminal output resistance	350 Ohms ± 5 Ohms
Insulation resistance (Min.)	2000 MOhms at 50V DC
Excitation voltage	10V(Recommended), 15V(Max.)
Electrical connection	Ø9mmx5m(22AWG x 4Core Shielded)
Protection class	meets IP 67
Safe overload	150% R.C
Ultimate overload	300% R.C



### ORDERING INFORMATION

#### BCR2 - 5T

MODEL BCR2	CAPACITY 5 ton
---------------	-------------------

### WIRING INFORMATION

