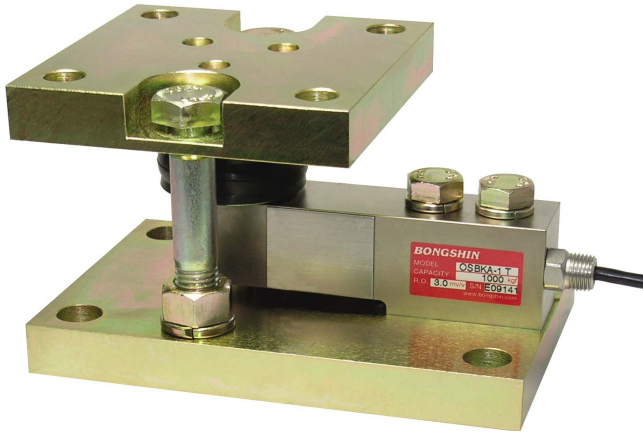


## Weigh Module

### Model BMK Series

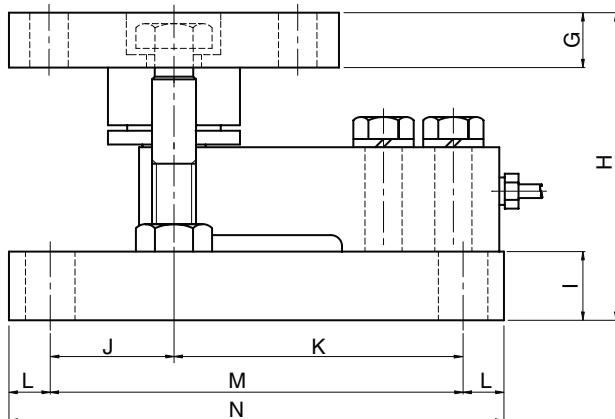
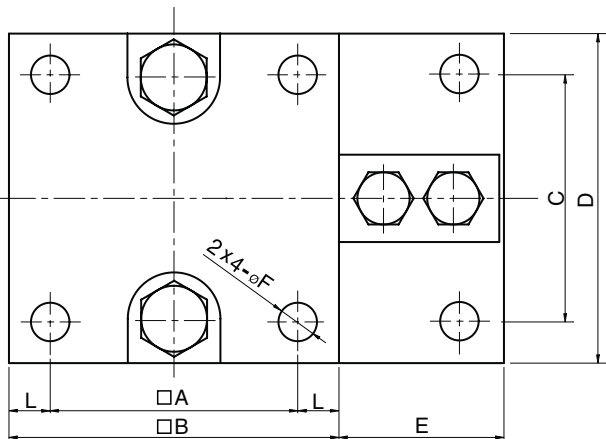
Specially Designed For  
Hopper, Bin And Tank(200kg~5t)



- Self centering design for accurate weighing.
- Self checking and overlift protection structure for no check rods needed.
- Fully welded stainless steel loadcell or fully sealed nickel plated load cells.
- Stainless steel or zinc plated steel mounting kit.

### SPECIFICATIONS

| MODEL                         | BMK11                                  | BMK21, BMK22                  |
|-------------------------------|----------------------------------------|-------------------------------|
| Rated capacity (R.C.)         | 200, 500kg, 1, 2, 3, 5t                |                               |
| Rated output(R.O.)            | 3mV/V ± 0.25%                          | 2mV/V ± 0.25%                 |
| Load cell model               | OSBK, OSBH                             | OSW                           |
| Non-linearity                 | ≤ 0.03% R.O.                           |                               |
| Hysteresis                    | ≤ 0.02% R.O.                           |                               |
| Non-repeatability             | ≤ 0.02% R.O.                           |                               |
| Creep error                   | ≤ 0.03% in 20min.                      |                               |
| Zero balance                  | ≤ 1% R.O.                              |                               |
| Compensated temperature range | -10 ~ 70°C                             |                               |
| Operating temperature range   | -20 ~ 80°C                             |                               |
| Temp. effect on rated output  | ≤ 0.02% LOAD/10°C                      |                               |
| Temp. effect on zero balance  | ≤ 0.03% R.O./10°C                      |                               |
| Terminal input resistance     | 400 Ohms ± 20 Ohms                     |                               |
| Terminal output resistance    | 350 Ohms ± 5 Ohms                      |                               |
| Insulation resistance (Min.)  | 2000 MOhms at 50V DC                   |                               |
| Excitation voltage            | 10V(Recommended), 15V(Maximum)         |                               |
| Electrical connection         | 200kg ~ 2t<br>(22AWG x 4Core Shielded) | Ø5mmx3m(Standard), 6m(Option) |
|                               | 3t ~ 5t                                | Ø5mmx6m                       |
| Protection class              | meets IP 67                            | meets IP 68                   |
| Safe overload                 | 150% R.C                               |                               |
| Ultimate overload             | 300% R.C                               |                               |

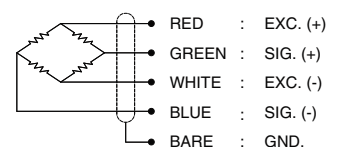


### ORDERING INFORMATION

**BMK11 - 2T**  
 MODEL CAPACITY  
 200kg, 500kg, 1t, 2t, 3t, 5t

BMK11: OSBK Load Cell + Zinc Plated Steel Mtg Kit  
 BMK21: OSW Stainless Steel Load Cell + Zinc Plated Steel Mtg Kit  
 BMK22: OSW Stainless Steel Load Cell + Stainless Steel Mtg Kit

### WIRING INFORMATION



### Dimension-mm

| Rated Capacity                | A   | B   | C   | D   | E  | F  | G  | H   | I  | J  | K   | L  | M   | N   | Weight (kg) |
|-------------------------------|-----|-----|-----|-----|----|----|----|-----|----|----|-----|----|-----|-----|-------------|
| 200kg ~ 2t(1.961kN ~ 19.61kN) | 90  | 120 | 90  | 120 | 60 | 14 | 20 | 107 | 20 | 45 | 105 | 15 | 150 | 180 | 8.0         |
| 3t ~ 5t(29.42kN ~ 49.03kN)    | 110 | 150 | 110 | 150 | 80 | 18 | 25 | 135 | 30 | 55 | 135 | 20 | 190 | 230 | 15.0        |

\* Specifications are subject to change without notice

JAN, 2010