

## Model OBBL Series

Bending Beam Type Load Cell  
(20kg ~ 200kg)

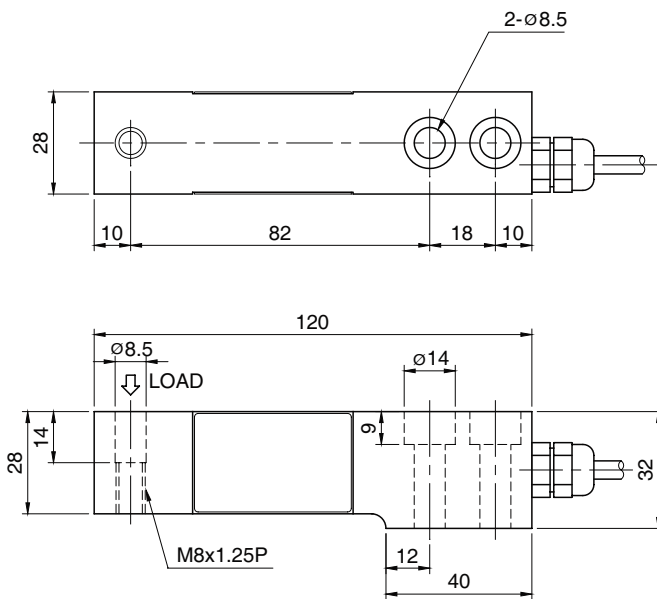
The OBBL series single ended bending beam load cell is designed for tension or compression loading applications.

- Aluminum alloy
- High accuracy & Low cost



### SPECIFICATIONS

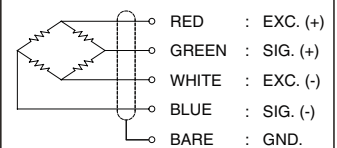
MODEL	OBBL
Rated capacity (R.C.)	20, 50, 100, 200kg
Rated output(R.O.)	2mV/V ± 0.25%
Non-linearity	≤0.03% R.O.
Hysteresis	≤0.02% R.O.
Non-repeatability	≤0.02% R.O.
Creep error	≤0.03% in 20min.
Zero balance	≤1% R.O.
Compensated temperature range	-10 ~ 70°C
Operating temperature range	-20 ~ 80°C
Temp. effect on rated output	≤0.03% LOAD/10°C
Temp. effect on zero balance	≤0.03% R.O./10°C
Terminal input resistance	430 Ohms ± 20 Ohms
Terminal output resistance	350 Ohms ± 5 Ohms
Insulation resistance (Min.)	2000 MOhms at 50V DC
Excitation voltage	10V(Recommended), 15V(Max.)
Electrical connection	ø5mmx3m(22AWG x 4Core Shielded)
Protection class	meets IP 65
Safe overload	150% R.C
Ultimate overload	300% R.C



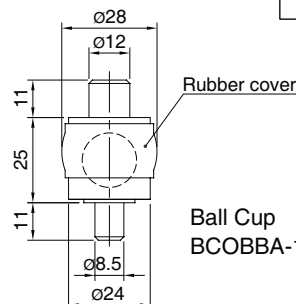
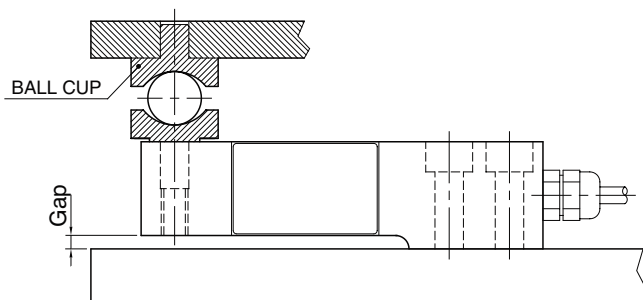
### ORDERING INFORMATION

**OBBL - 50**  
 MODEL OBBL      CAPACITY 20, 50, 100, 200kg

### WIRING INFORMATION



### Installation



Ball Cup  
BCOBB A-1(Stainless steel & Rubber)

\* Specifications are subject to change without notice

JAN, 2010