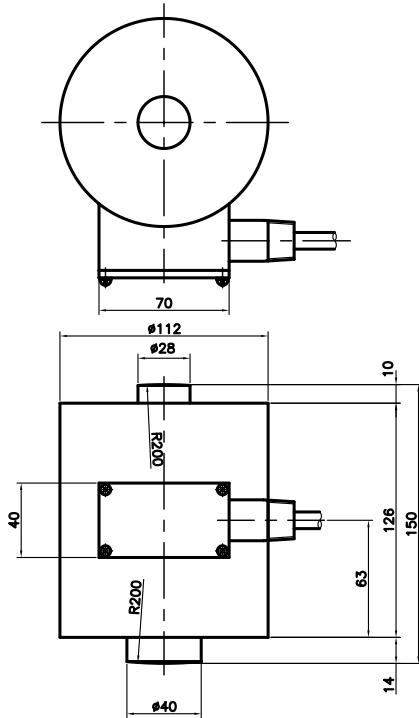


## Model CC52 Series

Compression Load Cell (2t ~ 5t)  
Canister Type



The CC52/BMS series are designed for heavy duty weighing applications, including hoppers, tanks, silos and high capacity scales.

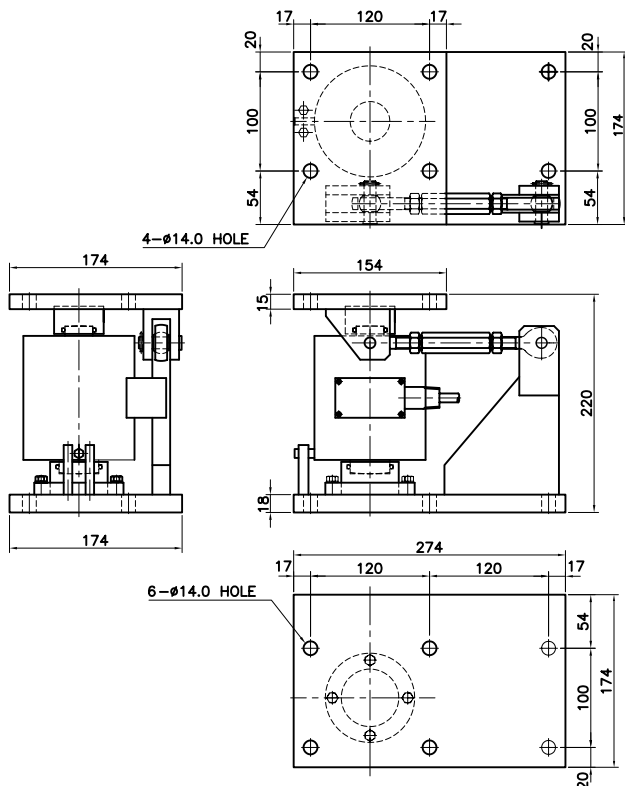
- Insensitive to side load
- Double convex type
- Robust high capacity design
- High alloy steel construction

## SPECIFICATIONS

MODEL	CC52(BMS)
Rated capacity (R.C.)	2, 3, 5t
Rated output(R.O.)	1.5mV/V ± 0.25%
Load Cell Material	Painted alloy steel
Non-linearity	≤0.05% R.O.
Hysteresis	≤0.05% R.O.
Non-repeatability	≤0.02% R.O.
Creep error	≤0.05% in 20min.
Zero balance	≤1% R.O.
Compensated temperature range	-10 ~ 70°C
Operating temperature range	-20 ~ 80°C
Temp. effect on rated output	≤0.05% LOAD/10°C
Temp. effect on zero balance	≤0.05% R.O./10°C
Terminal input resistance	350 Ohms ± 3.5 Ohms
Terminal output resistance	350 Ohms ± 5 Ohms
Insulation resistance (Min.)	2000 MOhms at 50V DC
Excitation voltage	10V(Recommended), 15V(Max.)
Electrical connection	∅9mmx5m(22AWG x 4Core Shielded)
Protection class	meets IP 67
Safe overload	150% R.C
Ultimate overload	300% R.C

## Model BMS Series

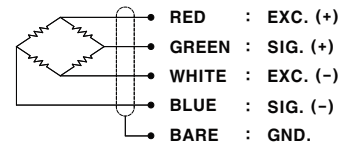
Mounting Kit (2t ~ 5t)



### ORDERING INFORMATION

CC52 -	5T
MODEL CC52 BMS	CAPACITY 2, 3, 5 ton

### WIRING INFORMATION



\* Specifications are subject to change without notice

DEC ,2005